

# General Purpose Relay

505 Series

## Part Number Description

**505** - **①** **②**

<b>① Contact Arrangement</b>	2PL : 2C (LED)	4PL : 4C (LED)	
<b>② Coil Voltage</b>	12VDC	24VDC	100/110VDC
	12VAC 50/60 Hz	24VAC 50/60 Hz	
	100/110VAC 50/60 Hz	200/220VAC 50/60 Hz	220/240VAC 50/60 Hz

## General Specification

<b>Contact Ratings</b>	<b>Contact Form</b>	2C	4C	
	<b>Contact Material</b>	Ag alloy (24K gold plate)		
	<b>Maximum Contact Resistance</b>	50mΩ		
	<b>Rated Current (Resistance Load)</b>	2C	4C	
		7A 30VDC 7A 250VAC	5A 30VDC 5A 250VAC	
	<b>Maximum Switching Current</b>	7A	5A	
	<b>Maximum Contact Capacity</b>	<b>DC</b>	210W	150W
		<b>AC</b>	1,750VA	1,200VA
<b>Maximum Rated Voltage</b>	125VDC / 250VAC			
<b>Minimum Switching Current *</b>	100mA 5VDC			
<b>Coil Ratings</b>	<b>Coil Voltage</b>	12VDC	24VDC	110VDC
		12VAC 50/60 Hz	24VAC 50/60 Hz	
		100/110VAC 50/60 Hz	200/220VAC 50/60 Hz	220/240VAC 50/60 Hz
	<b>Coil Consumption</b>	DC Coil : 0.9W ~ 1.1W		
		AC Coil : 0.9VA ~ 1.2VA (60Hz)		
<b>Minimum Pick Up Voltage</b>	80% of Nominal Voltage			
<b>Maximum Drop-out Voltage</b>	10% of Nominal Voltage DC			
	30% of Nominal Voltage AC			
<b>Operating Time</b>	20ms			
<b>Drop-out Time</b>	20ms			
<b>Insulation Resistance</b>	100MΩ min.(at 500VDC)			
<b>Dielectric Strength</b>	Between Contact Points : 1,000Vrms 1 minute			
	Between Contact Points and Coil : 1,500Vrms 1 minute			
<b>Life Cycle</b>	Mechanical : Min. 1,000,000			
	Electronic : Min. 200,000			
<b>Vibration Resistant</b>	10 ~ 55Hz (width of vibration 1.5mm)			
<b>Ambient Temperature</b>	-35 ~ +55°C (with no icing)			
<b>Ambient Humidity</b>	30% ~ 80% RH			
<b>Weight</b>	Approx. 35g			


☞ Please refer to the attention section.

☞ Specifications and materials can be changed without prior notice for the enhancement of the quality.

\* The minimum switching current is indicated as a standard value. The actual minimum Switching rate is variable factor according to the make and break frequency, environmental condition and anticipated credibility level. Therefore, it is recommended that tests be done to test actual load value before the production process.



## Product Selection

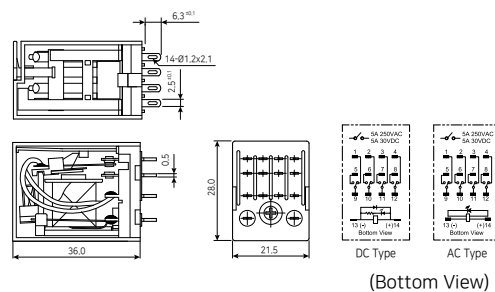
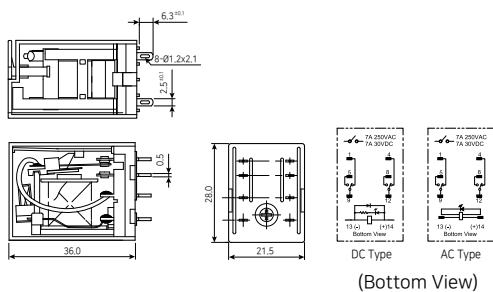
	Contact Form	Socket	Rated Voltage	Part Number	Weight (g)	
	2Pole (2C)	KPY2	220VAC	505-2PL 220VAC	35g	
		KPY22				
		KMY2	110VAC	505-2PL 110VAC	35g	
		KMY2C				
		KMY2Q	24VAC	505-2PL 24VAC	35g	
		KY08 (For soldering)	110VDC	505-2PL 110VDC	35g	
		KY08-02 (For P.C Board)	24VDC	505-2PL 24VDC	35g	
	12VDC	505-2PL 12VDC	35g			
	4Pole (4C)	KPY4	220VAC	505-4PL 220VAC	35g	
KPY41						
KMY4		110VAC	505-4PL 110VAC	35g		
KMY4C						
KMY4Q		24VAC	505-4PL 24VAC	35g		
KMY4S						
KY14 (For soldering)		110VDC	505-4PL 110VDC	35g		
KY14-02 (For P.C Board)	24VDC	505-4PL 24VDC	35g			
	12VDC	505-4PL 12VDC	35g			

## Dimension

unit : mm

505-2PL

505-4PL



☞ Refer to the socket drawings at page I -31